

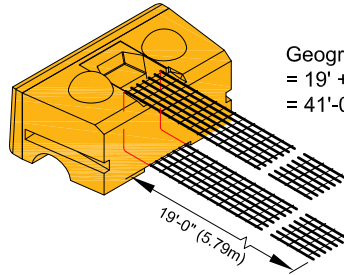
$\phi = 30^\circ$ | FINE TO MEDIUM SAND or SILTY SAND

LOAD CONDITION B | 250 lb/ft² (12 kPa) LIVE LOAD SURCHARGE, NO BACK SLOPE, NO TOE SLOPE

14 BLOCK HIGH SECTION

(14) 28" (710 mm) Blocks

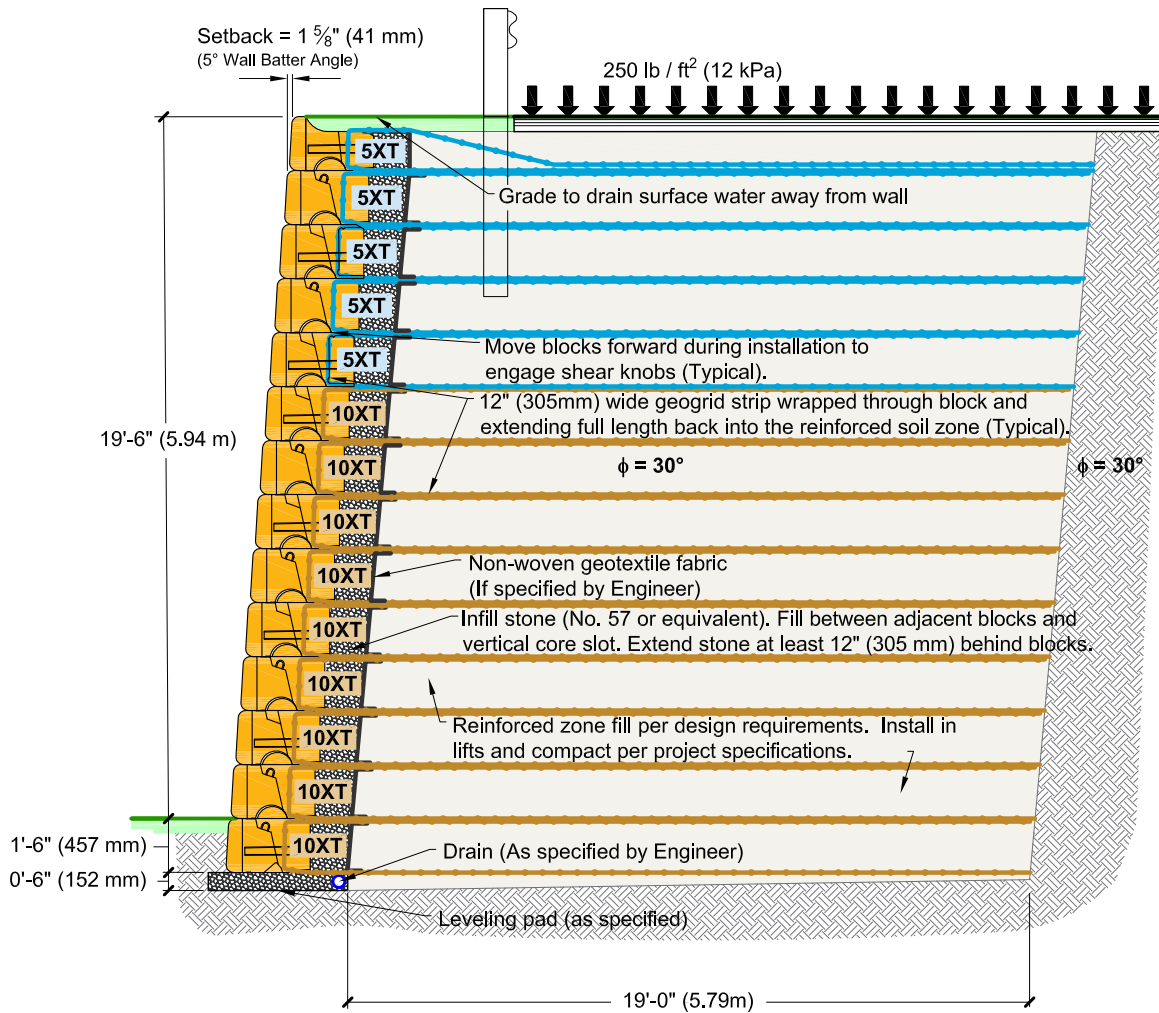
PRELIMINARY
Professional Engineering Design
Required for Construction



Geogrid cut length:
= 19' + 19' + 3'
= 41'-0" (12.50m)

Geogrid Rolls Required per Wall Length		
Type	Rolls / linear ft	Rolls / linear m
5XT	± 0.33	± 1.07
10XT	± 0.59	± 1.92

Geogrid shall be 12" (305 mm) wide strips of Mirafi geogrid, type as noted. Geogrid shall be **Factory cut** and **Certified** for width and strength by TenCate Mirafi.



This drawing is for reference only. Determination of the suitability and/or manner of use of any details contained in this document is the sole responsibility of the design engineer of record. Final project designs, including all construction details, shall be prepared by a licensed professional engineer using the actual conditions of the proposed site. Final wall design must address both internal and external drainage and all modes of wall stability.

DRAWN BY: B. Lindfors	Preliminary Wall Section	<p>05481 US 31 SOUTH, CHARLEVOIX, MI 49720 (866) 222-8400 ext 3010 • engineering@redi-rock.com www.redi-rock.com</p>
APPROVED BY: J. Johnson	Fine to Medium Sand or Silty Sand, $\phi=30^\circ$	
DATE: Oct 30, 2015	250 lb/ft ² Live Load Surcharge	
SHEET: 1 of 1	FILE: B_30_PC_28_252_cad.dwg	